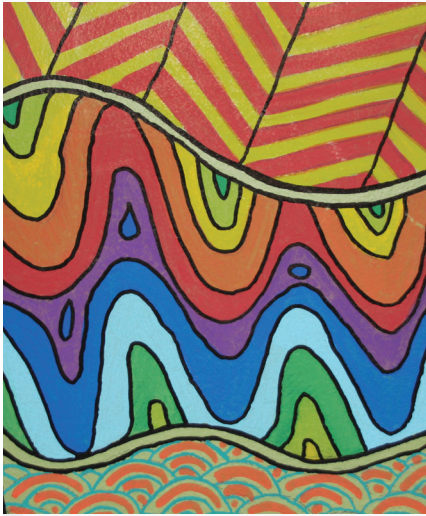




**SHOALHAVEN
RIVER COLLEGE**
YEARS 9 TO 12

Information Booklet 2020



Shoalhaven River College acknowledges the Australian Aboriginal and Torres Strait Islander peoples of this land. We acknowledge the traditional custodians of the land on which our School is located. We pay our respects to Elders, past, present and future. We are committed to honouring Australian Aboriginal and Torres Strait Islander peoples' unique cultural and spiritual relationships to the land, waters and seas and their rich contribution to our community.

—Artwork by Jasmine Sarin, JSKoori Designs

CONTENTS

4 Welcome

6 Who we are

Our staff
Our classes
Our learning approach

8 Our core values

Respect Yourself and Others
Take Responsibility
Strive

9 Things to note

10 Eligibility to apply

11 2020 courses

Stage 5: Years 9 & 10
Stage 6: Year 11
Stage 6 Course Offering
SRC hours of operation
Fees
Term dates for 2020

14 How to apply

Stages of enrolment
Ongoing enrolment
Cessation of enrolment
Re-enrolment of previously
withdrawn student

17 Enrolment application

WELCOME

from the Principal

Dear Students, Parents and Guardians,

Thank you for your interest in Shoalhaven River College (SRC). SRC is a registered non-government High School operating under the auspices of Kiama Community College Inc. It is a small High School, with a nominal fee of \$100 per annum.

In 2020, we will cater for 45 students across years 9-11, with a view to accommodating 60 students from years 9-12 in 2021.

We welcome applications for enrolment from students who feel that a mainstream educational setting is not the ideal environment for them to thrive in academically, socially or personally.

Our School, being small in student numbers, is personal, supportive and focused on the individual's success at all times.

Our staff are passionate about young people succeeding in their schooling and being equipped to pathway successfully into their future beyond High School.

Should you have any further questions or require further information, please contact our friendly team on (02) 4243 8824.



Trish Ikin
Principal, Shoalhaven River College



In 2020, we will cater for 45 students across years 9-11, with a view to grow to up to 60 students from years 9-12 in 2021.

WHO WE ARE

Shoalhaven River College (SRC) is a small registered non-government school located in Bomaderry, operating under the auspices of Kiama Community College Inc. SRC provides an alternative High School educational environment where students are provided with the opportunity to undertake Stage 5 curriculum and gain their ROSA, as well as Stage 6 curriculum to gain their Higher School Certificate.

SRC is ideal for students who may experience difficulty in succeeding in mainstream education, or may feel uncomfortable in a mainstream High School. Our School provides an empowering and engaging education environment so that students can progress to live productive and satisfying lives beyond High School.

In 2020, we are commencing a small Year 11 class to undertake the first year of the Stage 6 curriculum. In 2021, these students will be able to complete Year 12 at SRC.

Doing school differently to help young people thrive.



Our staff

Our staff are approachable so that students can discuss any concerns about their schooling or life in general. Our Youth Support Worker provides students with ongoing additional whole of life support. Staff are committed to enhancing and individualising learning opportunities and strengthening the wellbeing of every student.

Our classes

We have small class sizes (average of 15 students per class) so that each student can have their individual learning needs taken into account. In 2020, there will be a maximum of 45 students attending SRC in Years 9, 10 and 11. Students can choose how they are positioned in the class to learn (for example, on the floor, at a desk or standing). Teachers may choose a change in environment to deliver the lesson, for example, by going outside. We don't have school uniforms or bells and all staff and students refer to each other on a first name basis.

Our learning approach

We apply adult learning principles, based on mutual respect and celebrating difference. Students have the opportunity to take on the responsibilities of learning as an adult where we foster academic achievement, independence, belonging and the celebration of life's accomplishments. Opportunities for success come every day for students at SRC. We encourage students to have a sense of working in collaboration with staff to succeed.



In 2020, we are commencing a small Year 11 class to undertake the first year of the Stage 6 curriculum. In 2021, these students will be able to complete Year 12 at SRC.

OUR CORE VALUES

OUR SCHOOL HAS THREE CORE VALUES WHICH OUR STAFF AND STUDENTS OBSERVE IN DAILY SCHOOL LIFE.

Respect Yourself and Others

Our School environment is respectful, friendly and inclusive. We foster an environment where all students and staff feel a sense of belonging to the SRC community, with respect being the foundation of this. Students will be accepted for who they are, and embraced for what they can bring to the School community. Students are expected to respect themselves and also to respect others, including respecting the rights of others to have a productive learning environment.

Take Responsibility

We are a School community where all individuals take responsibility for their learning and relationships as well as their academic and personal growth. When things don't go to plan we use it as an opportunity to reflect, learn, be responsible for our actions and mature. Students are expected to take responsibility for their attendance, behaviour, choices and their engagement with their learning.

Strive

All individuals are encouraged and supported to move forward and grow in all areas of their life, be that within SRC, outside of, or beyond SRC. Learning opportunities should be valued and active participation given. Students are encouraged to set and pursue individualised goals. Students are celebrated when they achieve a success of any kind and are supported and encouraged as needed so that they continue to strive.

THINGS TO NOTE

SRC is a small, independent school with low/no fees. We have been designated by NESA as a 'special assistance' school. There are eligibility criteria and an application procedure to determine who can enrol. We maintain the right to accept or deny student applications on the basis of an applicant's readiness to participate in an adult learning environment.

SRC uses a balanced welfare/ learning model of support as we understand that learning cannot take place if a student does not first have a sense of security and belonging.

SRC is not an 'easier' option for school life, nor is it a behavioural school. While our School environment and delivery are different, students will need to demonstrate effort and determination in order to succeed at SRC and beyond.

Because SRC is not a specialist 'behavioural school', we are unable to cater for one-on-one behavioural needs or high level assistance.

We are unable to accept everyone. We carefully select students that meet our outlined criteria and who proceed through the application and interview process.

Not all young people will find that SRC is suitable for them, and there will be times when it is in the best interests of the student to be enrolled elsewhere.

We have an expectation that our students will stay on the premises during school hours. Additionally, all students will be issued with the Student Handbook which outlines the SRC Code of Conduct and rules. Failure to abide by the behavioural Code of Conduct will result in students progressing through the discipline process. This ranges from suspension to withdrawal of enrolment depending on the breach and the student's attitude towards their behaviour.



A thriving environment, with the freedom to be you.



We believe in you.
You are accepted.
You belong here.
You've got this.

ELIGIBILITY TO APPLY

The students who attend our School are young people that may struggle to undertake their education in a mainstream school.

We welcome applications from students who feel that a mainstream educational setting is not the ideal environment for them to thrive in academically, socially or personally.

The selection criteria for SRC focus on the following priorities:

A demonstrated desire to learn. Students who enrol have to want to attend and participate in all activities.

A maturity to learn in an adult learning environment with the ability to work independently for short periods of time.

An acceptable level of risk posed to other students.

A level of functional literacy and the ability to function independently.

Barriers to effective participation in mainstream education and / or experience of disadvantage. These barriers may include challenges associated with:

*mental health,
social inclusion,
financial disadvantage,
Aboriginal or Torres Strait Islander background,
family breakdown,
educational disengagement.*

2020 COURSES

Stage 5: Years 9 & 10

In 2020, SRC will continue to offer Stage 5 of the NSW School Syllabus (Years 9 & 10) which can lead to the awarding of the Record of School Achievement (ROSA).

We teach the NSW NESA Stage 5 School Curriculum for both Years 9 and 10 which includes: English, Maths, Science, PDHPE and HSIE (History & Geography). Students also participate in 'Life and Work Matters' which focuses on personal development, learning for life, volunteering in the community and exploring the world of work.

Attainment of the ROSA is dependent on participation in Stage 4 subjects at a student's previous school/s. SRC may be able to catch students up on some learning that may have been missed in Stage 4, but please be aware that it may not be possible to bridge all unmet Stage 4 requirements.

A student who has not met all Stage 4 requirements is still very welcome to apply to enrol at SRC, but will need to be aware that, in some circumstances, a student's prior educational history may mean that they are ineligible for a ROSA.

Stage 6: Year 11

In 2020, SRC will be offering Stage 6 of the NSW NESA School Syllabus for Year 11 students, which will contribute towards the Higher School Certificate. In 2021, these students will progress into Year 12 and will be eligible for their Higher School Certificate if they successfully meet all requirements.

Our Stage 6 program will cater for students seeking to obtain their HSC. Courses have been carefully selected to have broad appeal, for relevance and for engagement. Our curriculum will allow our students to prepare for further education, training and employment.

Our curriculum will not provide students with the opportunity to obtain a Australian Tertiary Admission Ranking (ATAR).

To be eligible to apply for Year 11, a student must:

- have satisfactorily completed Years 9 and 10 or gained other qualifications that satisfies NESA
- complete *HSC: All My Own Work* (or its equivalent) before submitting any work for Year 11 or Year 12 courses.

Discovering and celebrating your unique strengths.

Stage 6 Course Offering

We have planned the following program for students commencing Year 11 in 2020. This program ensures that enrolling students will have the opportunity to attain their HSC.

Year 11	Year 12 [#]
2u English Studies	2u English Studies
2u Outdoor Recreation	2u Outdoor Recreation
2u Maths Standard	Hospitality [#]
2u Community & Family Studies	At least 3 of the following:
2u Modern History	<i>2u Maths Standard 1*</i>
2u Investigating Science	<i>2u Community & Family Studies*</i>
	<i>2u Modern History*</i>
	<i>2u Investigating Science*</i>

one or two of the courses listed and denoted with an asterisk () may not be offered in Year 12 if there is insufficient student demand.

[#]Students will undertake a Hospitality course to develop employment skills in Term 4 2020. While this will not form part of their HSC program, students who successfully complete units of competency will receive a nationally recognised Statement Of Attainment from a Registered Training Organisation for this VET course.

Please be aware that, whilst it is highly unlikely, courses offered may be subject to change prior to the commencement of the 2020 school year. Please also be aware that SRC will not be offering a program that provides eligibility for an ATAR.

SRC hours of operation

SRC's hours of operation are Monday to Friday 8:45am – 2:55pm (not including public holidays). The School provides supervision from 8.30am.

Fees

There is a resource fee of \$100 per year. This covers curriculum resources required for subject delivery and excursion costs. Instances of financial hardship will be considered as it is not the intention of the School to have finances be a barrier to learning at SRC.

Term dates for 2020

SRC generally corresponds to the NSW school term dates. Students will be notified of any alteration to school dates including student free days, staff development or school excursions.

Term	First Day	Last Day
1	29 January	9 April
2	28 April	3 July
3	21 July	25 September
4	12 October	16 December



No bells. No uniform. Small classes.
Individualised learning at your own pace.

HOW TO APPLY

THERE ARE FOUR STEPS IN THE APPLICATION AND ENROLMENT PROCESS.

1 Application for enrolment

To apply for enrolment, please complete the SRC application form with the required supporting documentation. You can return your enrolment form directly to the administration office at the School at 1 Mattes Way Bomaderry or email it to info@shoalhavenrivercollege.org.au. Places are often in demand at SRC so you are encouraged to submit your application as soon as possible so that you may be offered an interview in the near future. If you are uncertain about any aspect of the application process, we encourage you to contact us for assistance.

2 Student interview

After we receive your application, School staff will assess whether you meet the criteria for the School, as outlined in this handbook. We will ring to offer the student an interview and schedule a time to meet. This interview will be made as informal and comfortable as possible for the student. Students are welcome to bring a support person, such as a parent, guardian, support worker or friend, along to the interview but we are most interested in what the student has to share with us about why they would like to join our School. At the interview we will also ask the student about their experiences of schooling and their background. A student's acceptance into the School is dependent, in part, on their desire for a fresh start as well as their willingness to learn. Please note, an interview does not guarantee an offer of enrolment at SRC.

Creating a place to belong, for a brighter future.



3 Enrolment Phase 1: Initial enrolment – Two week period

Following the interview, the SRC Principal and School staff will make a decision as to whether the student will be offered an initial enrolment at SRC. This decision will take into account the following:

- Is the student able and willing to learn within an adult learning environment?
- Does the student demonstrate a desire to attend?
- Does the student meet the selection criteria?
- Can SRC meet the students needs?
- Does SRC currently have places available?

You will be advised via telephone if an offer of initial enrolment will be made. During the two-week initial enrolment period the School will assess how the student is responding to the School environment in relation to the following criteria for renewal of enrolment:

- Attendance
- Engagement
- Social interaction
- Attitude towards learning

The School will communicate with the student and their parents/carers during the initial enrolment period about how the student is progressing in relation to the criteria for renewal of enrolment as identified above. If the student's enrolment is not renewed, the student's enrolment at the School will cease at the end of the initial enrolment period.

4 Enrolment Phase 2: Renewal of enrolment

At the end of the initial enrolment period the School may offer the student renewal of enrolment based on the School's assessment of the student against the criteria for renewal of enrolment (attendance, engagement, social interaction and attitude towards learning). Renewal of enrolment provides ongoing enrolment at the School subject to the student and their parents/carers meeting the School's requirements for continuing enrolment.

Ongoing enrolment

If a student successfully participates in the School community in their initial enrolment period of two weeks, they will be offered a renewal/ ongoing enrolment. Continuing enrolment at the School is then subject to the student abiding by the School's Code Of Conduct and rules outlined in the Student Handbook. Breaches will result in students progressing through the discipline process.

Cessation of enrolment

A student's enrolment may cease in the following circumstances:

1. Expiry of the initial enrolment period, with no renewal of enrolment offered
2. Withdrawal of enrolment by the student and their parents/carers
3. Withdrawal of the enrolment by the School on the grounds of discipline or a breach of the School's Code of Conduct.

Where a student's enrolment ceases, the student and their parents/carers are required to inform the School of their post-school destination, that is whether the student has enrolled in education or training at another education provider or is in employment and who the education/ training and/or employment is with. Where a student is under the age of 17, the School should be informed of their post-school destination. If this is not known, the School is required to report to the NSW Department of Education that the student's destination is unknown.

Re-enrolment of previously withdrawn student

Should a previously withdrawn student wish to apply to re-enrol, they are only able to do so after twelve (12) months from the date of withdrawal of enrolment or earlier upon application to the Principal if there is evidence that behaviours have changed.

The student will be interviewed by the Principal and must explain how they will comply with the Code Of Conduct and rules of SRC. In the application to enrol assessment, the School will consider whether the student is now ready to take up the challenge of an adult learning environment.

Should a student's application for re-entry after withdrawal be accepted, a written and agreed to individual plan will be written by the Principal in conjunction with the Youth Support Worker and/or Teachers. This plan will outline what is mandatory for the student to comply with in re-commencing their education with SRC and will be written on a case by case basis. The plan will consider appropriate behaviour, transition process and the length of transition.





APPLICATION FOR ENROLMENT

Please fill out all sections of this form and contact SRC staff if you require assistance with any section. Please note: completion of an application for enrolment form does not guarantee an interview or offer of enrolment at SRC.

SECTION 1: STUDENT DETAILS

Year applying for (please tick): ☐ Year 9 ☐ Year 10 ☐ Year 11

Surname:		First Name:						
Preferred Name:		Date of Birth:	D	D	M	M	Y	Y
Age:		Street Address:						
Town/Suburb:		Postcode:						
Gender (please tick):								
<input type="checkbox"/> Male			<input type="checkbox"/> Female			<input type="checkbox"/> Other:		<input type="checkbox"/> Prefer not to say
Living Arrangements (please tick):								
<input type="checkbox"/> With parents			<input type="checkbox"/> With other relatives			<input type="checkbox"/> With Mother as primary carer		
<input type="checkbox"/> With Father as primary carer			<input type="checkbox"/> Independent			<input type="checkbox"/> Between accommodation		
<input type="checkbox"/> In foster care			<input type="checkbox"/> With guardian			<input type="checkbox"/> Other:		
Is the young person (please tick):								
<input type="checkbox"/> Aboriginal			<input type="checkbox"/> Torres Strait Islander			<input type="checkbox"/> Neither		<input type="checkbox"/> Prefer not to say
Town of Birth:		Country of Birth						
Does the young person come from a Non-English speaking background?								<input type="checkbox"/> Yes <input type="checkbox"/> No
Does the young person speak another language at home?								<input type="checkbox"/> Yes <input type="checkbox"/> No
Is the young person receiving Youth Allowance?								<input type="checkbox"/> Yes <input type="checkbox"/> No
Is the young person receiving Austudy?								<input type="checkbox"/> Yes <input type="checkbox"/> No
Is the young person currently subject to any Court Orders?								<input type="checkbox"/> Yes <input type="checkbox"/> No
Does the young person have a Case Manager at FACS?								<input type="checkbox"/> Yes <input type="checkbox"/> No
If yes, Case Manager Name:			Phone Number:					

SECTION 2 : PARENT/GUARDIAN DETAILS

Contact Details of Primary Caregiver - Parent/ Guardian (if applicable):

Name:		Relationship to Student:	
Preferred Name:		Gender:	<input type="checkbox"/> Male <input type="checkbox"/> Female <input type="checkbox"/> Other:
Home Phone:		Mobile Phone:	
		Work Phone:	
Email Address			

SECTION 3: AGENCY AND ASSESSMENT DETAILS

To be completed by parent/ guardian or a referring agency (if applicable):

Organisation:			
Referring/Contact Worker's Name:			
Phone:		Service Description:	
Will the young person be continuing service with the organisation?			<input type="checkbox"/> Yes <input type="checkbox"/> No

Other Agency details:

Is the young person receiving any support from any other service or practitioner (such as youth services, school counsellor, health organisations)?:

☐Yes ☐No ☐Unsure

An agency is any service that the student is presently connected with.

If yes, name of service:

Type of service:

Name of caseworker:

Attach additional pages if required

Assessment/Support Details:

Has the young person ever received an assessment from a psychiatrist, psychologist, behavioural practitioner?

☐Yes ☐No

If yes, which one:

Date of assessment

If possible, please attach an outline of results or a copy of the report

Is the young person under a Mental Health Treatment Plan?

☐Yes ☐No

SECTION 4: EDUCATIONAL DETAILS**Previous school enrolments:**

School	Grade	Year commenced	Last date attended	Reason For Leaving

Has the young person had any suspensions? ☐Yes ☐No

Has the young person had any expulsions? ☐Yes ☐No

If yes to either suspension or expulsion, please provide details (year, length, reason):

Please detail below any schooling achievements (eg. school representative, academic, sporting, the arts).

SECTION 5: STUDENT HEALTH SUMMARY

Does the young person have any of the following disabilities or current diagnosis? (Please tick):

☐Language

☐Intellectual

☐Vision impairment

☐Mental health

☐Autism

☐Physical

☐Hearing

☐Other:

Please provide details of current disability and diagnosis:

To your knowledge, is there anything in your child's history or circumstances (including medical and behavioural history) which might pose a risk of any type to him or her, other students, or staff at SRC?

☐Yes ☐No

If yes, please provide a brief description:

SECTION 6 : ROSA ELIGIBILITY (FOR YR 9 & 10 APPLICANTS ONLY)

SRC is accredited to deliver Stage 5 towards the awarding of the Record of School Achievement (ROSA). It is important that students and their families are informed that to be eligible for a ROSA a student must have completed Stage 4 requirements. SRC will be in contact with prior schools to verify all students current ROSA Eligibility Status. Please be aware that if these have not been met, whilst it is possible to be welcomed to still learn at SRC, attainment of the ROSA may not occur.

I understand that if _____ (students name) has not met the requirements of the ROSA, they will not be eligible to attain this through their schooling at SRC.

Signed (Student):		Date:	D	D	M	M	Y	Y
Signed (Parent/Caregiver)		Date:	D	D	M	M	Y	Y

SECTION 7 : HSC ELIGIBILITY (FOR YR 11 & 12 APPLICANTS ONLY)

SRC is accredited to deliver Stage 6 towards the awarding of the Higher School Certificate (HSC). It is important that students and their families are informed that to be eligible for a HSC a student must have undertaken and completed the required pathway to HSC. Please be aware that if these have not been met, whilst it is possible to be welcomed to still learn at SRC, attainment of the HSC may not occur.

I understand that if _____ (students name) has not met the requirements of the HSC, they will not be eligible to attain this through their schooling at SRC.

Signed (Student):		Date:	D	D	M	M	Y	Y
Signed (Parent/Caregiver)		Date:	D	D	M	M	Y	Y

SECTION 8: ATTACHMENTS

The following items must be attached to your application:

Item	Attached (Tick)
Copy of your latest school report (compulsory)	<input type="checkbox"/>
Practitioners report (if applicable) such as youth services, school counsellor, health organisations etc.	<input type="checkbox"/>
If possible, please attach supporting documentation-please do not attach original copies. Whilst this is not necessary for your initial application, this information must be provided prior to enrolment at SRC.	
Item	Attached (Tick)
Birth Certificate	<input type="checkbox"/>
Letter of support from service provider or referral worker (if applicable)	<input type="checkbox"/>
Immunisation Record	<input type="checkbox"/>
Relevant Family Court Orders (if applicable)	<input type="checkbox"/>
Referring agency letter (if available)	<input type="checkbox"/>

SECTION 9: PRIVACY AND PERSONAL INFORMATION POLICY

1. Overview

In the course of its business, Shoalhaven Community College (SRC) may collect information from students or persons seeking to enrol with SRC, either electronically or in hard copy format, including information that personally identifies individuals. SRC may also record various communications between individuals and SRC.

In collecting personal information, SRC will comply with the requirements of the Australian Privacy Principles (APPs) set out in the *Privacy Act 1988 (Cth)* as amended by the *Privacy Amendment (Enhancing Privacy Protection) Act 2012*.

2. Collection and use of personal information

SRC will only collect personal information from individuals by fair and lawful means which is necessary for the functions of SRC. SRC will only collect sensitive information with the consent of the individual and if that information is reasonably necessary for the functions of SRC.

The information requested from individuals by SRC will only be used to provide details of study opportunities, to enable efficient school administration, to maintain proper academic records, to assess an individual's entitlement to achieve the ROSA, and to report to government agencies as required by law. If an individual chooses not to provide SRC with certain information, then SRC may be unable to enrol that person.

3. Disclosure of personal information

Personal information about students studying with SRC may be shared with the Australian Government and designated authorities, including NESAI (NSW Education Standards Authority), the NSW Department of Education and Commonwealth and State or Territory government departments and authorised agencies. This information includes personal and contact details, course enrolment details and changes.

SRC will not disclose an individual's personal information to another person or organisation unless:

- a) the individual concerned is reasonably likely to have been aware, or made aware that information of that kind is usually passed to that person or organisation;
- b) the individual concerned has given written consent to the disclosure;
- c) SRC believes on reasonable grounds that the disclosure is necessary to prevent or lessen a serious and imminent threat to the life or health of the individual concerned or of another person;
- d) the disclosure is required or authorised by or under law; or
- e) the disclosure is reasonably necessary for the enforcement of the criminal law or of a law imposing a pecuniary penalty, or for the protection of the public revenue.

Where personal information is disclosed for the purposes of enforcement of the criminal law or of a law imposing a pecuniary penalty, or for the purpose of the protection of the public revenue, SRC shall include in the record containing that information a note of the disclosure.

Any person or organisation that collects information on behalf of SRC or to whom personal information is disclosed as described in this procedure will be required to not use or disclose the information for a purpose other than the purpose for which the information was collected by them or supplied to them.

4. Security and integrity of personal information

SRC is committed to ensuring the confidentiality, security and integrity of the personal information it collects, uses and discloses.

SRC will take all reasonable steps to ensure that any personal information collected is relevant to the purpose for which it was collected, is accurate, up to date and complete.

SRC will store securely all records containing personal information and take all reasonable security measures to protect personal information it holds from misuse, interference, loss, unauthorised access, modification or disclosure.

Where SRC has no further use for personal information for any purpose disclosed by SRC, or is no longer required to maintain that personal information, all reasonable steps will be taken to destroy or de-identify the information.

5. Right to access and correct records

Individuals have the right to access or obtain a copy of the personal information that SRC holds about them. Requests to access or obtain a copy of personal information must be made in writing. There is no charge for an individual to access personal information that SRC holds about them; however SRC may charge a fee to make a copy. Individuals will be advised of how they may access or obtain a copy of their personal information and any applicable fees within 10 days of receiving their written request. Where it is reasonable to do so, access to the information will be provided in the manner requested by the individual.

If an individual considers their personal information to be incorrect, incomplete, out of date or misleading, they can request that the information be amended. Where a record is found to be inaccurate, a correction will be made as soon as practical. Where an individual requests that a record be amended because it is inaccurate but the record is found to be accurate, the details of the request for amendment will be noted on the record. There is no charge for making a request to correct personal information.

Written requests for access to, to obtain a copy of, or correct personal information held by SRC should be sent to:

The Principal
Shoalhaven River College
1 Mattes Way
Bomaderry, NSW, 2541

6. Complaints about an alleged breach of Privacy

Where an individual believes that SRC has breached a Privacy Principle in relation to that individual they may lodge a complaint using Kiama Community College's grievance handling procedures which enables students and prospective students to lodge grievances of a non-academic nature, including grievances about handling of personal information and access to personal records.

SECTION 10: DECLARATION AND CONSENT

I declare that the information provided throughout this form is true, complete and correct to the best of my knowledge and belief.

Signed (Student):		Date:	D	D	M	M	Y	Y
Signed (Parent/Guardian/Caregiver (if applicable))		Date:	D	D	M	M	Y	Y
Signed Referral Worker (if applicable)		Date:	D	D	M	M	Y	Y

I consent to SRC staff contacting any of the organisations mentioned in this form to discuss the applicant's current situation.

Signed (Student):		Date:	D	D	M	M	Y	Y
Signed (Parent/Guardian/Caregiver (if applicable))		Date:	D	D	M	M	Y	Y

I consent to SRC staff contacting the student's current/ prior school (detailed below) to discuss the applicant's current situation and ROSA eligibility status.

Signed (Student):		Date:	D	D	M	M	Y	Y
Signed (Parent/Guardian/Caregiver (if applicable))		Date:	D	D	M	M	Y	Y

Student Name		DOB:	D	D	M	M	Y	Y
Student Board of Studies Number								
School Name:								
Contact Person		Position of Contact Person:						



**SHOALHAVEN
RIVER COLLEGE**
YEARS 9 TO 12

1 Mattes Way, Bomaderry NSW 2541

P (02) 4243 8824

E info@shoalhavenrivercollege.org.au

www.shoalhavenrivercollege.org.au